

**Manor Gardens Centre** is situated in North Islington and offers health and community services.

We are close to Holloway Road and Archway Underground stations, which makes us an ideal venue for Training courses, Seminars, AGM's, Meetings, Conferences, Away Day & Workshops etc.

### Facilities Included in hire:

- Flipchart stand, paper & pens
- Projection Screen
- Hot & Cold Water Dispenser
- Free Wifi connection

### Audio Visual Equipment

#### Available for Hire:

- Data Projector
- Laptop
- Plasma TV (inbuilt speakers)
- PA system with microphone

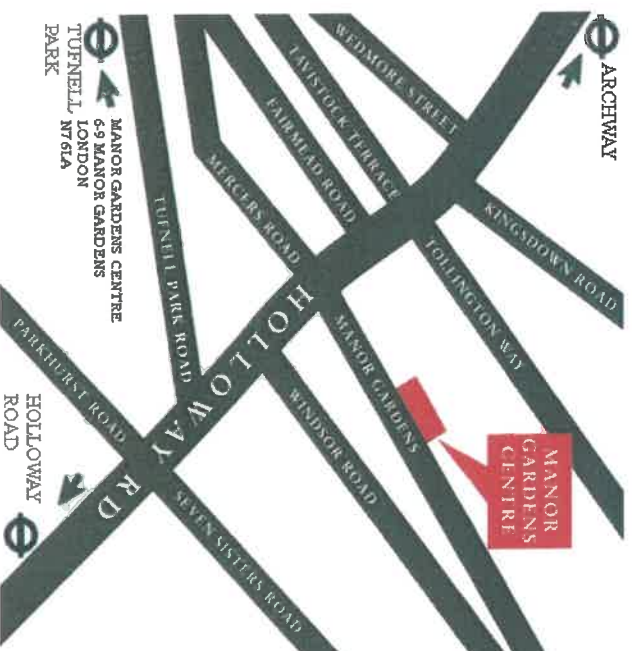
Please contact **Kim** or **Norma** for full costing price  
0207 561 5250

**Making a Difference for over 100 Years**

Registered Charity No. 1063053.  
Registered Company No. 3386929

[www.manorgardencentre.org](http://www.manorgardencentre.org)  
[www.facebook.com/ManorGardensCharity](http://www.facebook.com/ManorGardensCharity)  
[www.twitter.com/Manor\\_Gardens](http://www.twitter.com/Manor_Gardens)

### Directions & Contact Information



#### TUBES:

Archway (Northern line)  
Holloway Road  
(Piccadilly line)  
Tufnell Park (Northern line)

#### BUSES:

4, 17, 29, 43, 91, 153, 253,  
259, 271, 279

### MANOR GARDENS WELFARE TRUST

6-9 Manor Gardens  
London N7 6LA

Tel: (020) 75615250

Fax: (020) 7263 0596

Email: [admin@manorgardencentre.org](mailto:admin@manorgardencentre.org)

[www.manorgardencentre.org](http://www.manorgardencentre.org)



## Room Hire

## 2018 - 2019

(1st April 2018 - 31st March 2019)

## Training Courses

## Conferences

## Workshops

## Meetings

## Seminars

## Away Day

## AGMS

# The Training Room

A bright and airy venue space ideal for larger events

**Size:** 620 sq ft

**Seats:** up to 50 theatre style.

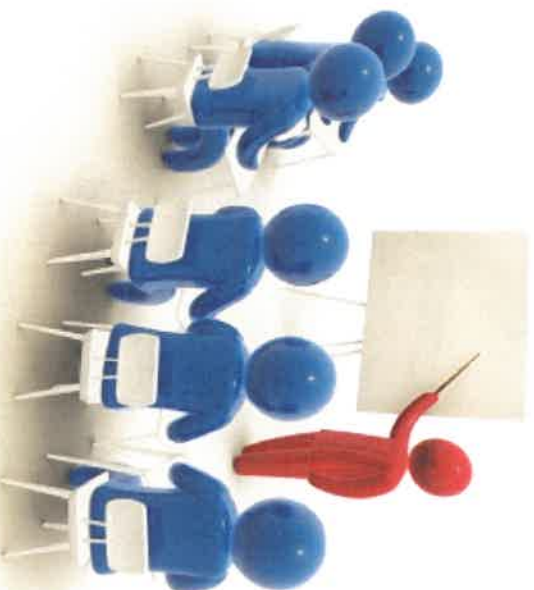


# The Conference Room

Large, quiet and bright room great for workshops

**Size:** 450 sq ft

**Seats:** up to 20 theatre style



area specific guidance  
 professional teaching help  
 skills crucial develop ability practices  
 goal development  
 achieve independent standard  
 coached  
 develop  
 instructor method  
 expertise client  
 experience  
 training  
 group result  
 value learning  
 growth motivation personal  
 strategy scope  
 individual

# Workshop

## **ROOM HIRE RATES**

### **MONDAY-FRIDAY RATES**

|                                  |         |
|----------------------------------|---------|
| <u>Training Room</u>             |         |
| Flat rate for the day (8 hours): | £190.00 |
| Half day (4 hours am/pm):        | £100.00 |
| Hourly rate                      | £ 33.00 |
| <u>Conference Room</u>           |         |
| Flat rate for the day (8 hours): | £180.00 |
| Half day (4 hours am/pm):        | £ 95.00 |
| Hourly rate                      | £ 30.00 |

### **WEEKEND RATES**

|                                  |         |
|----------------------------------|---------|
| <u>Training Room</u>             |         |
| Flat rate for the day (8 hours): | £210.00 |
| Half day (4 hours am/pm):        | £115.00 |
| Hourly rate:                     | £ 41.00 |
| <u>Conference Room</u>           |         |
| Flat rate for the day (8 hours): | £200.00 |
| Half day (4 hours am/pm):        | £105.00 |
| Hourly rate:                     | £ 36.00 |

### **REFRESHMENT (AVAILABLE**

ON REQUEST - MONDAY - FRIDAY)  
 Tea, Coffee, Sugar, Milk, Fruit Juice, Herbal Teas & Biscuits

**£3.00 per person**

**PLEASE NOTE: REFRESHMENT IS NOT AVAILABLE AT THE WEEKENDS**

**CHEQUE MADE PAYABLE TO:  
 MANOR GARDENS WELFARE TRUST**

**PRICES VALID FROM**

**1st April 2018 - 31st March 2019**